

Installation Instruction

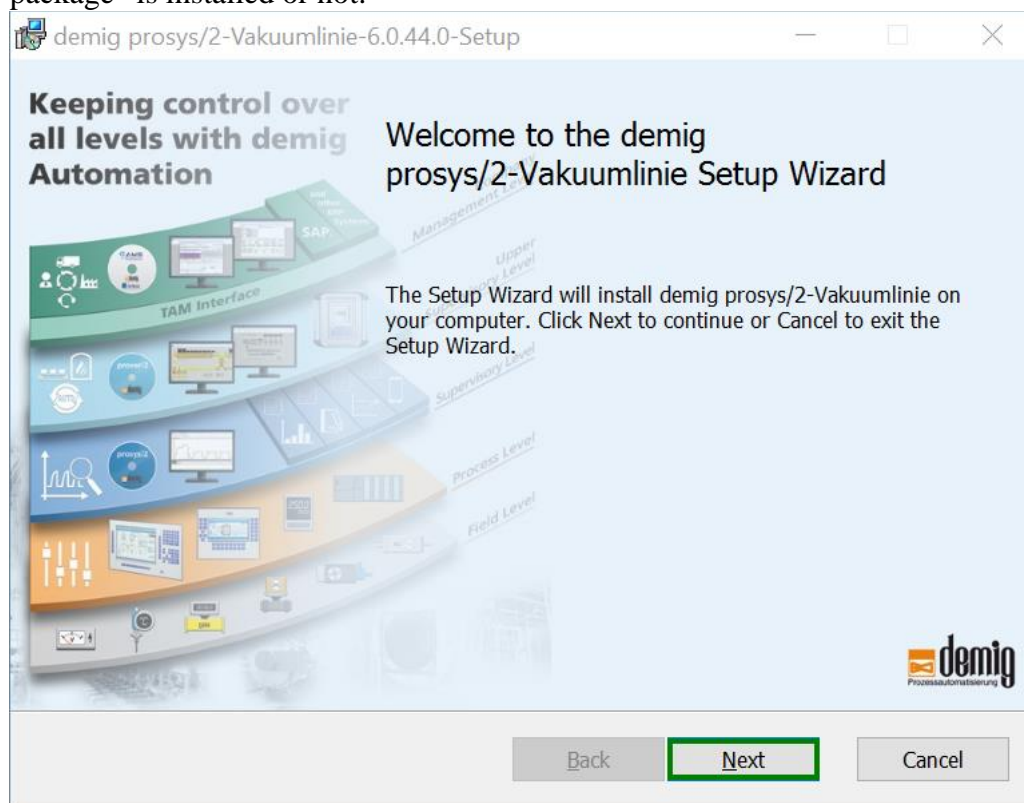
This is a step by step instruction for prosys/2 installation. This instruction is divided in the parts server installation and workstation installation.

Server installation

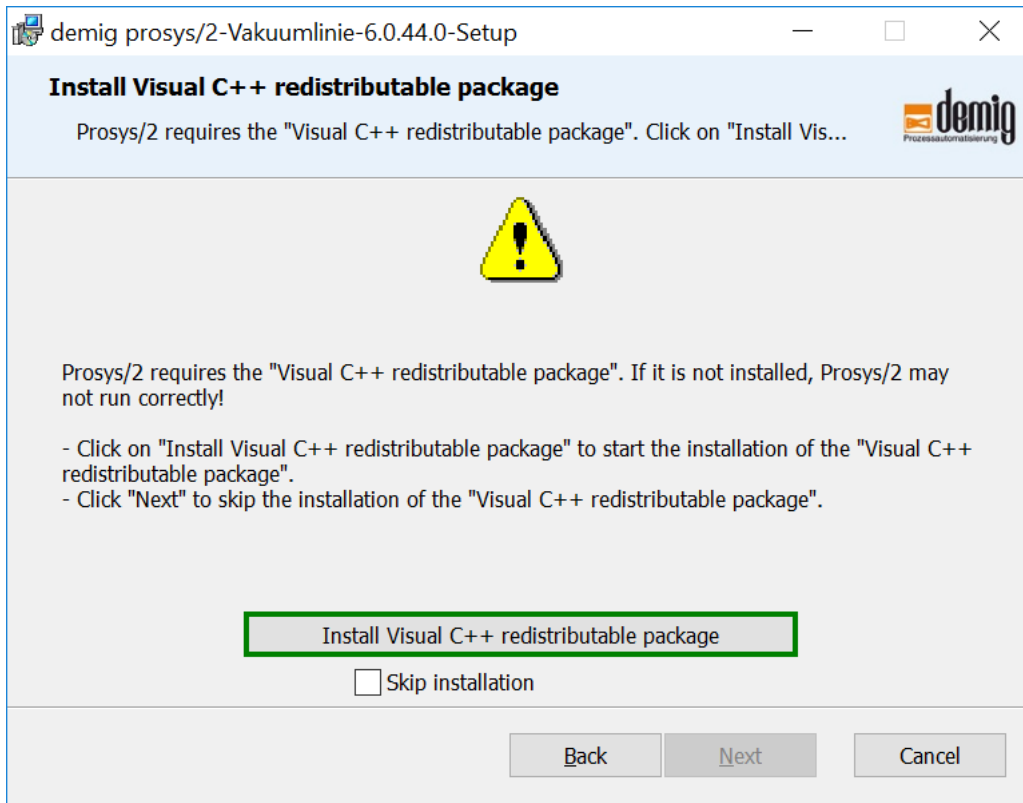
This installation guides you step by step through the server installation setup.

Step 1:

Click „Next“ to continue with step 2 or 5 depending on whether „Visual C++ redistributable package“ is installed or not.

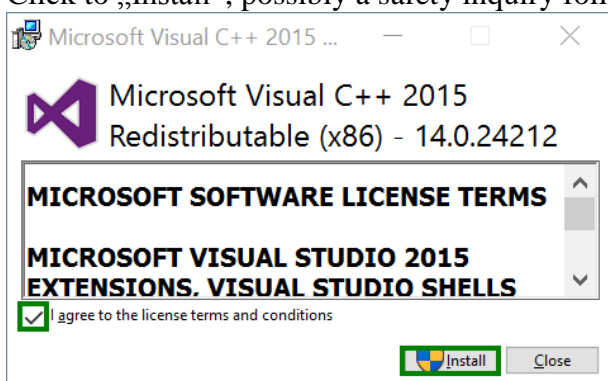


Step 2:

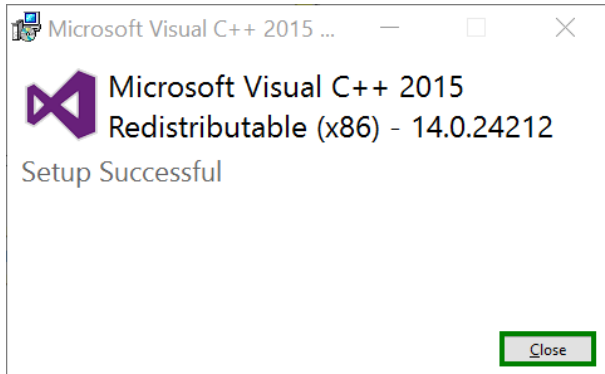


Step 3:

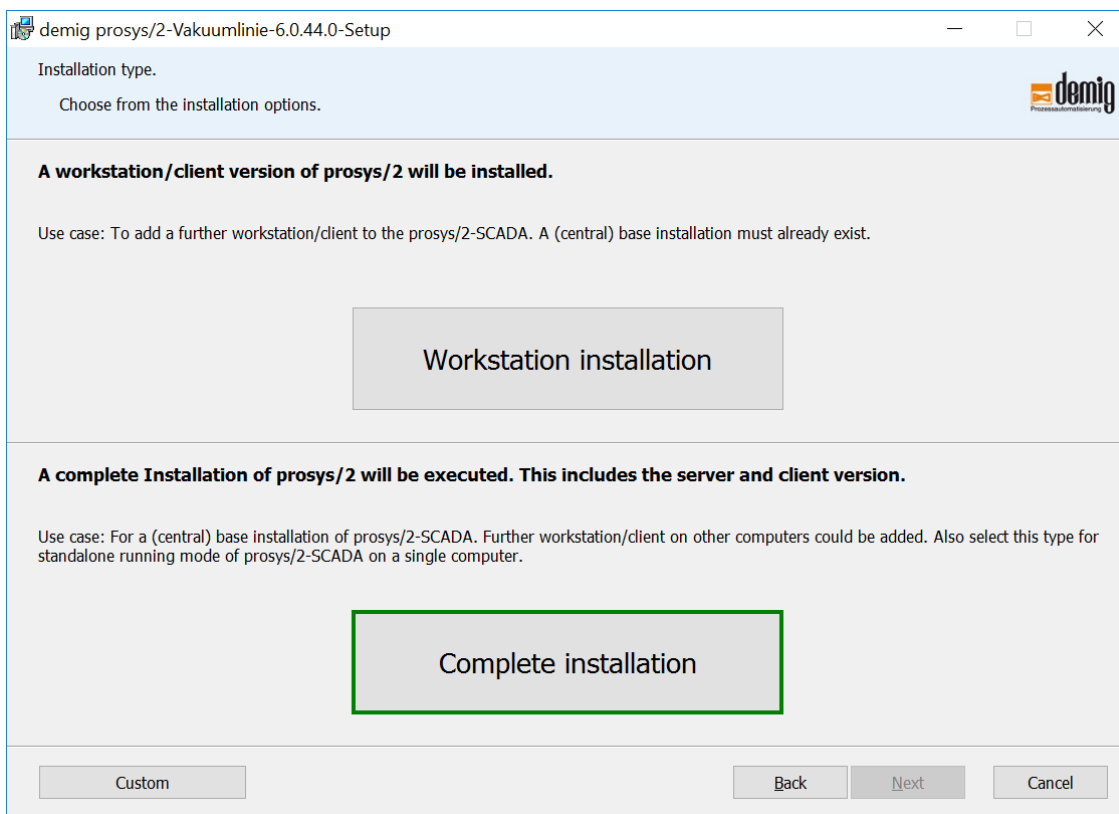
Click to „Install“, possibly a safety inquiry follows which has to be answered with „Yes“.



Step 4:

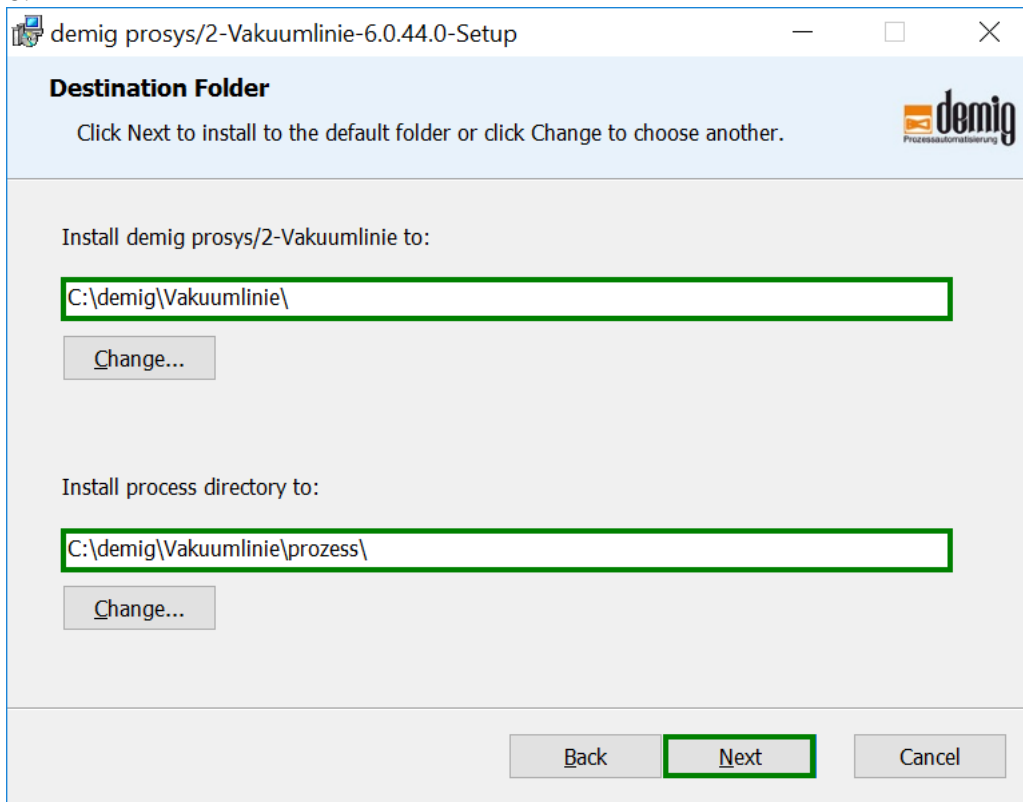


Step 5:

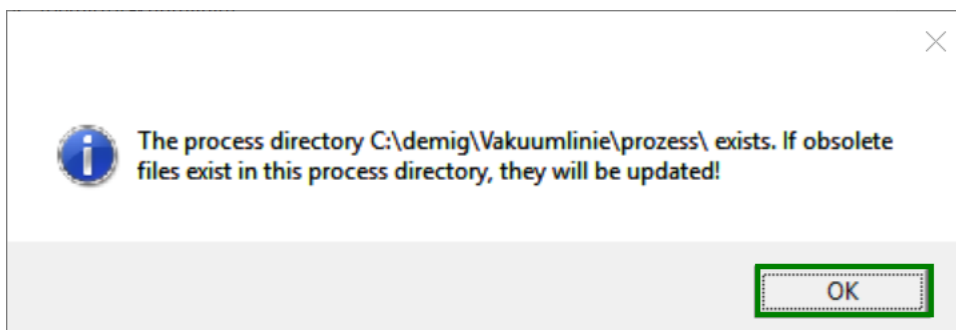


Step 6:

Here, it is possible to adopt the installation path for the prosys/2 application. Moreover, you can select an already existing process directory (directory with netcfg.dat), or enter an empty directory. After selecting an existing process directory, continue with step 7, otherwise with step 8.



Step 7:

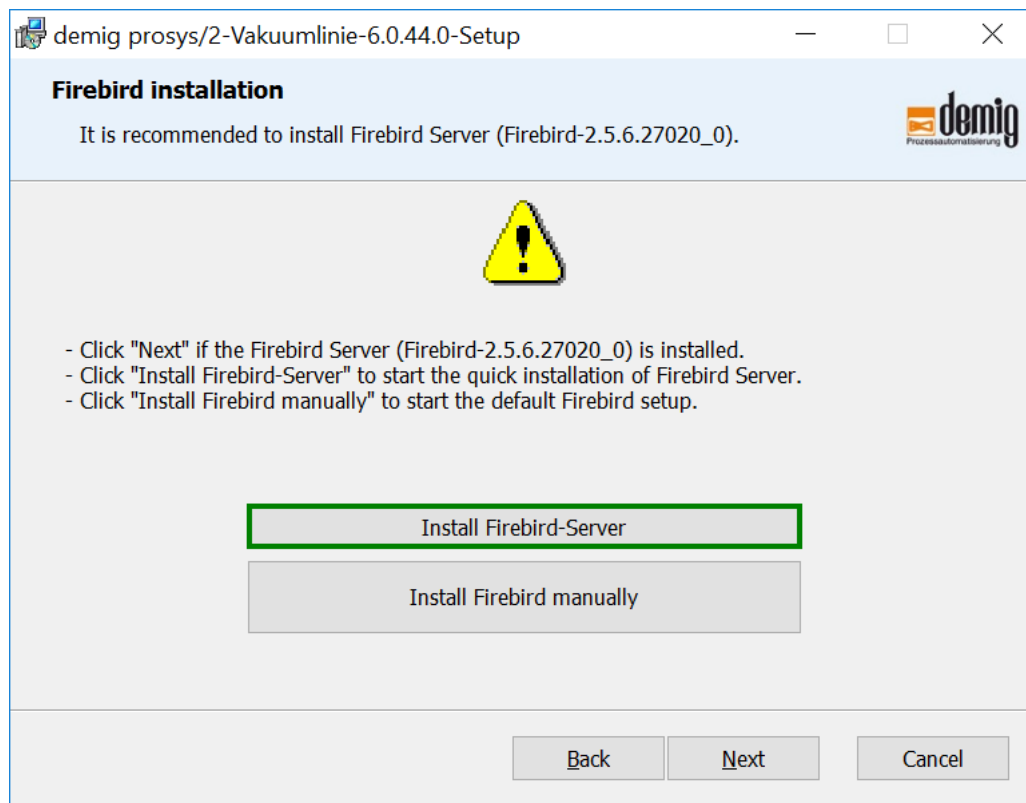


Step 8:

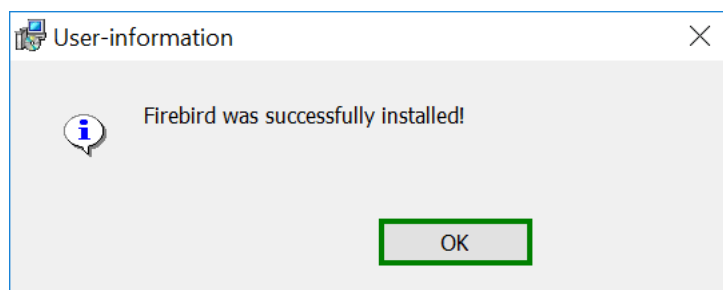
Is the Firebird server already installed?

- No: Continue with step 9
- Yes: Continue with step 11

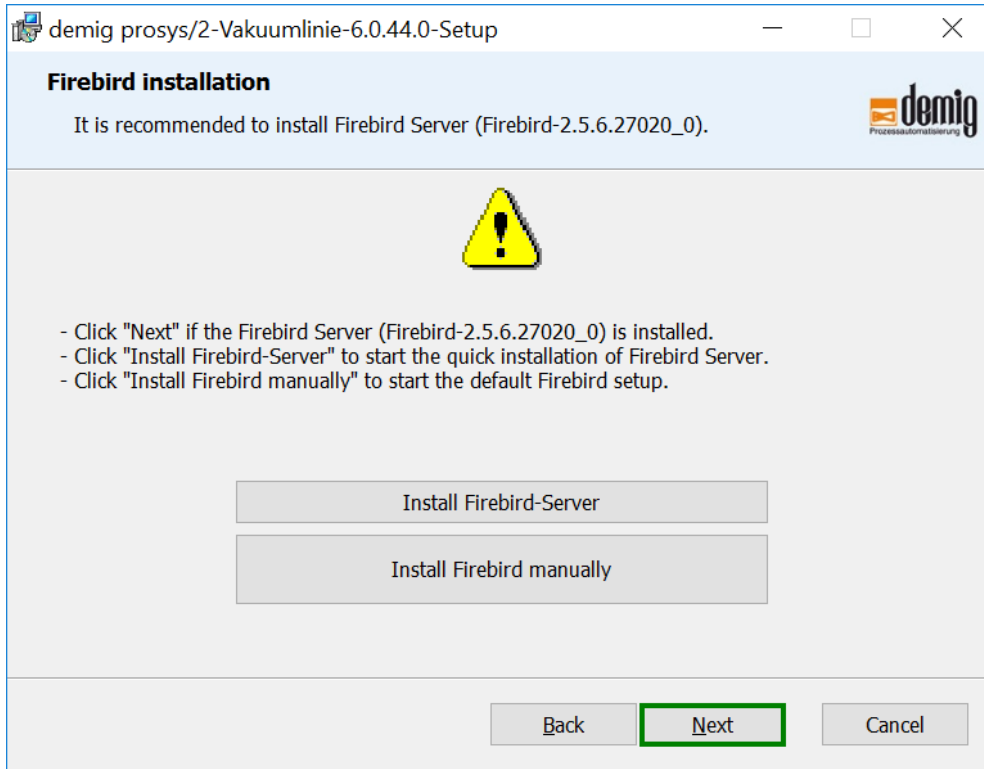
Step 9:



Step 10:

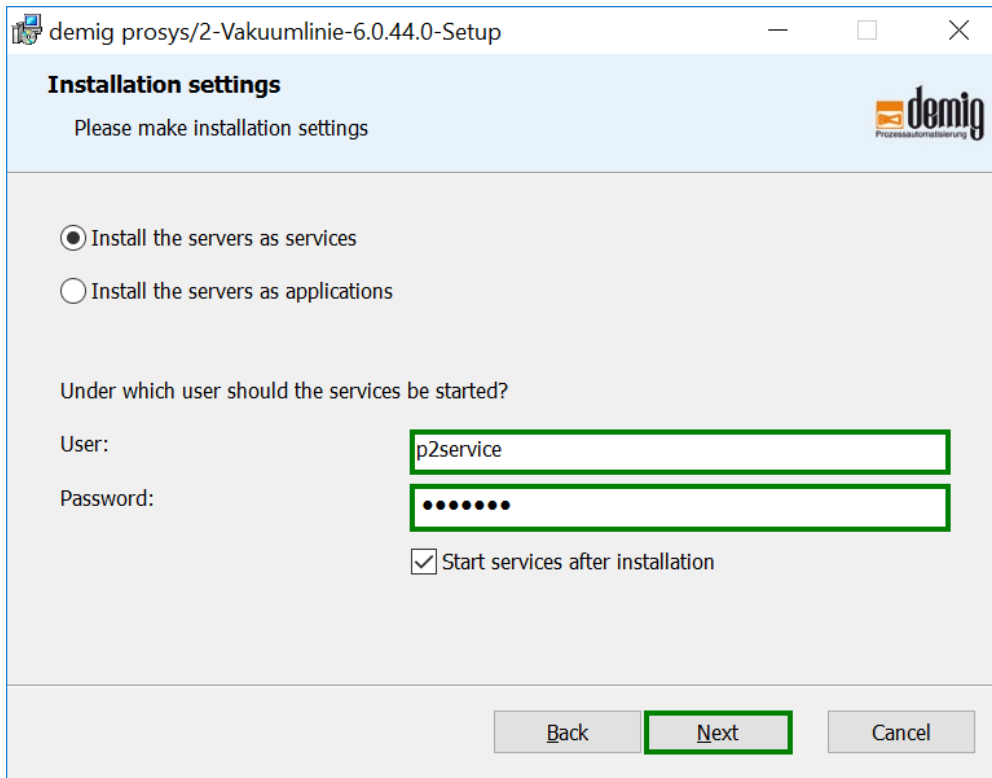


Step 11:



Step 12:

Here, a local user has to be entered with user name and password. This is necessary to start later on services.



demig prosys/2-Vakuuminlinie-6.0.44.0-Setup

Installation settings
Please make installation settings

Install the servers as services
 Install the servers as applications

Under which user should the services be started?

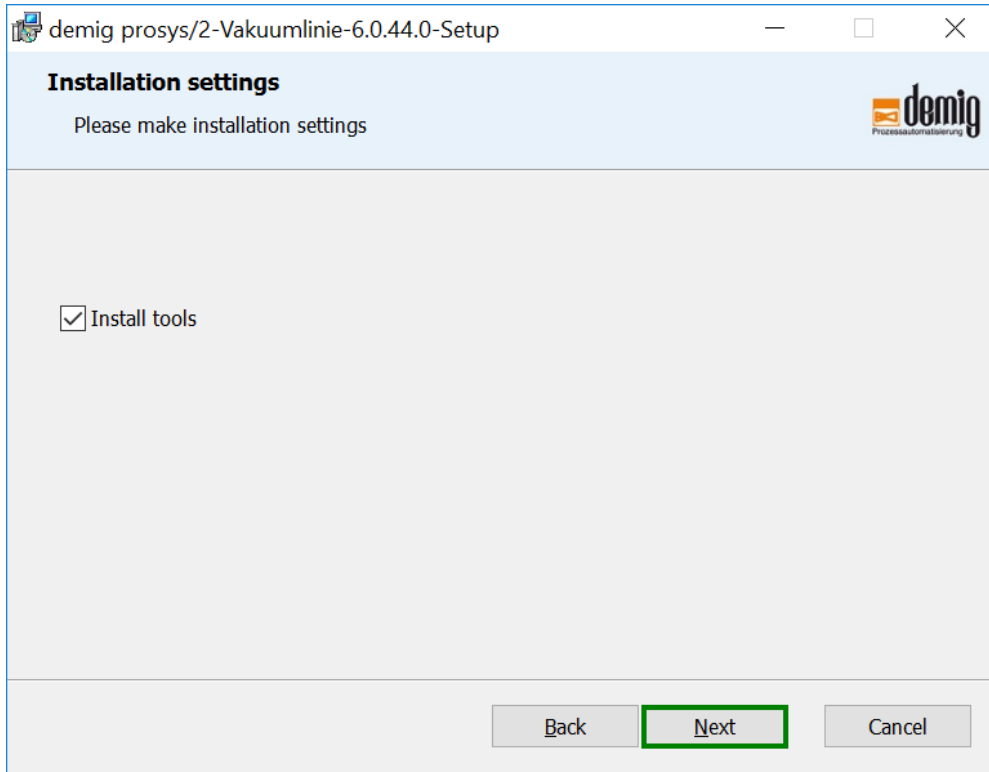
User:

Password:

Start services after installation

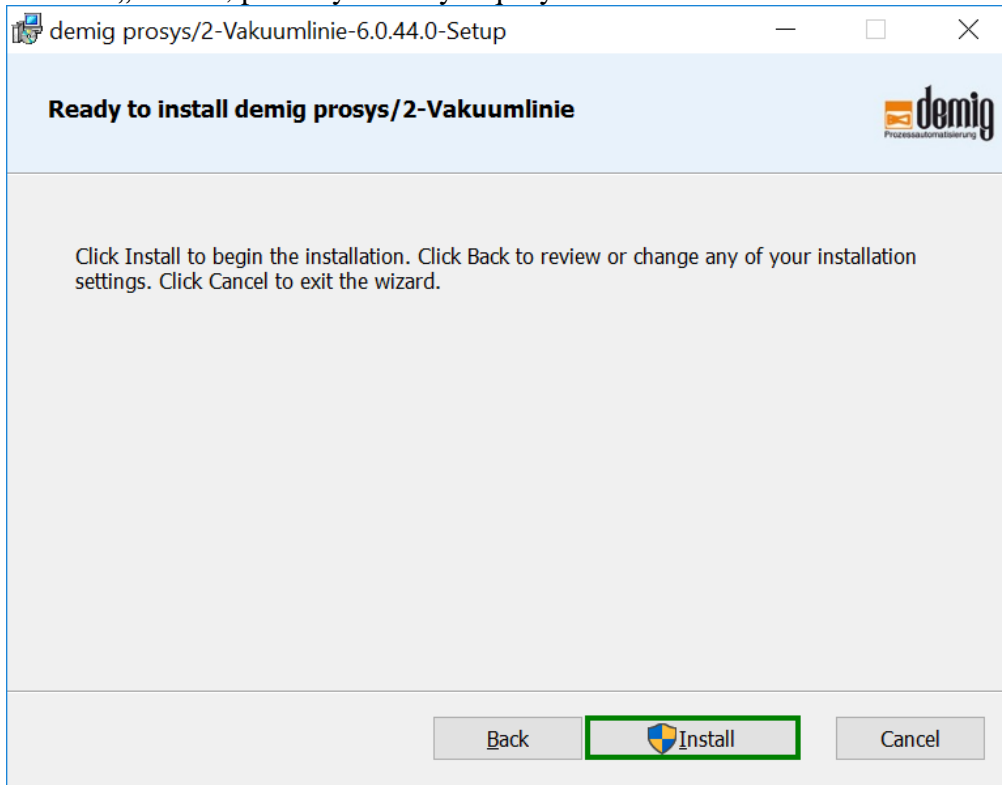
Back **Next** Cancel

Step 13:



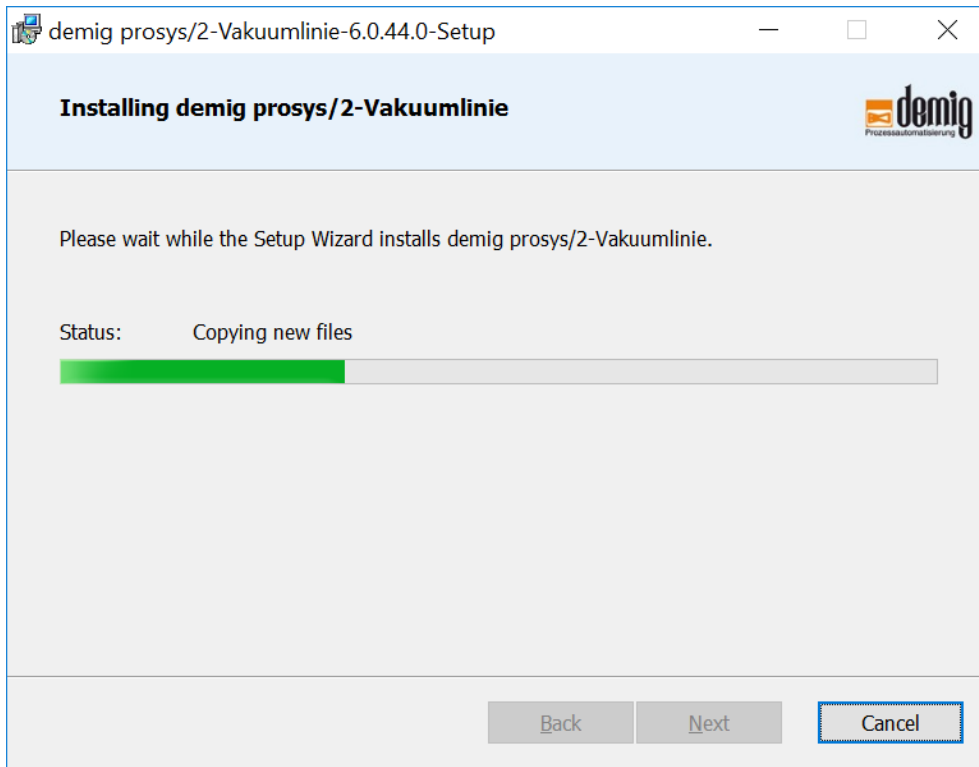
Step 14:

Click to „Install“, possibly a safety inquiry follows which has to be answered with „Yes“.



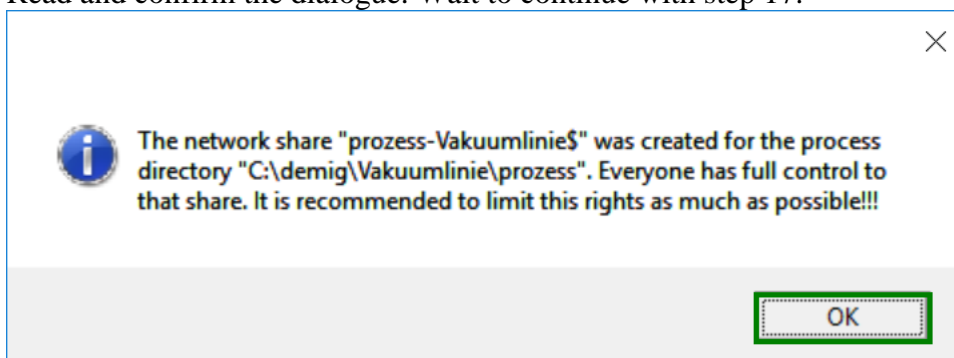
Step 15:

In case a new process directory has been copied step 16 follows automatically, otherwise step 17 follows.

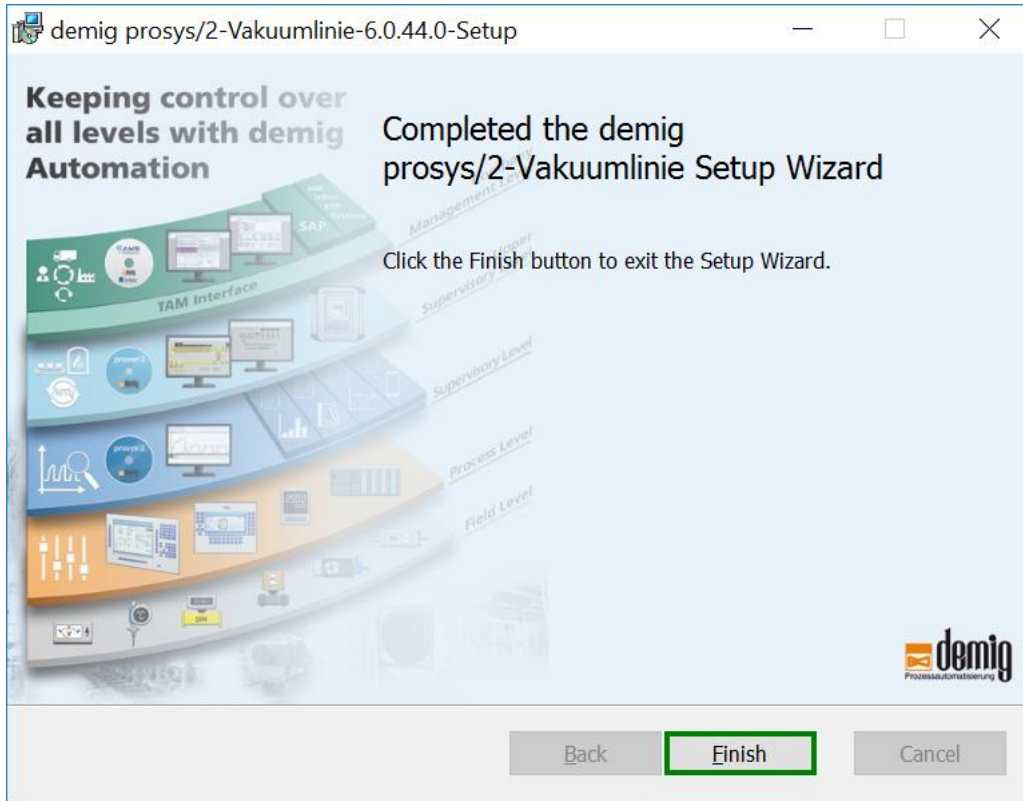


Step 16:

Read and confirm the dialogue. Wait to continue with step 17.



Step 17:

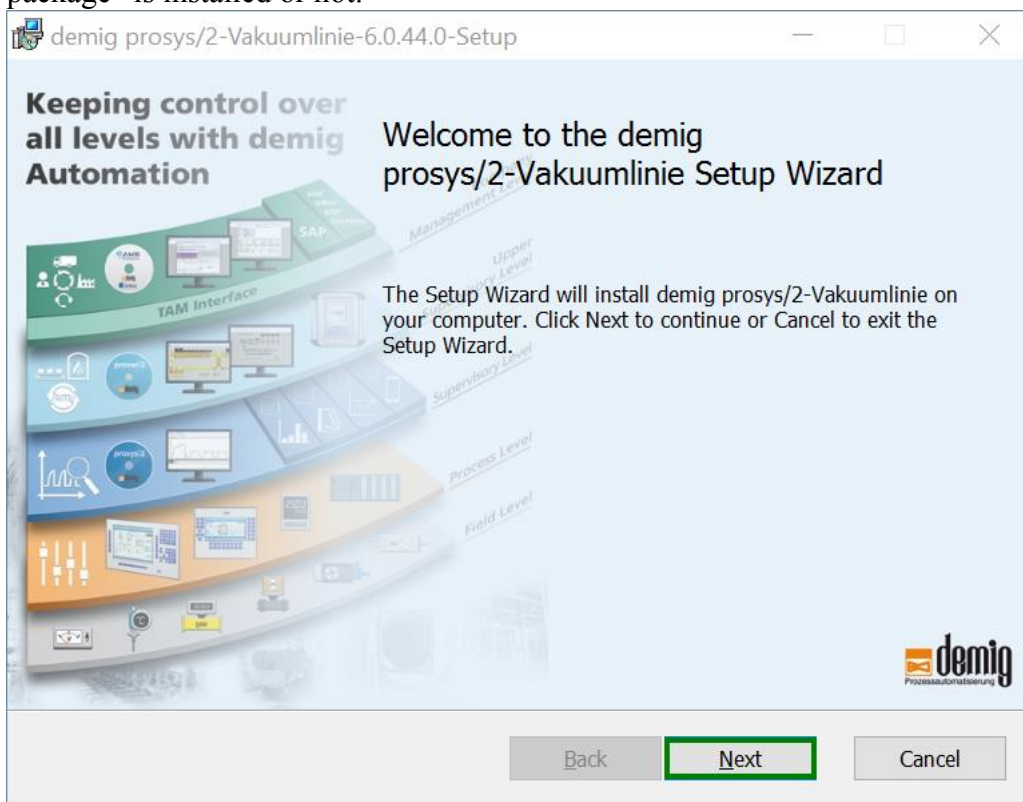


Workstation installation

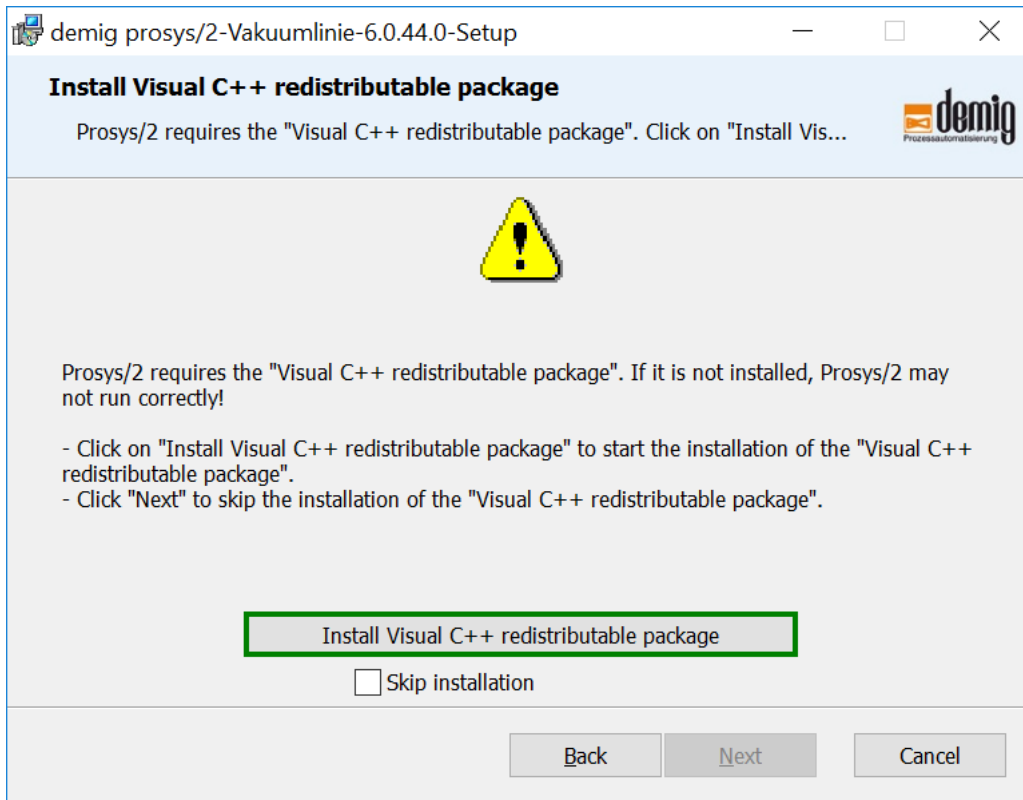
This installation guides you step by step through the workstation installation.

Step 1:

Click „Next“ to continue with step 2 or 5 depending on whether „Visual C++ redistributable package“ is installed or not.

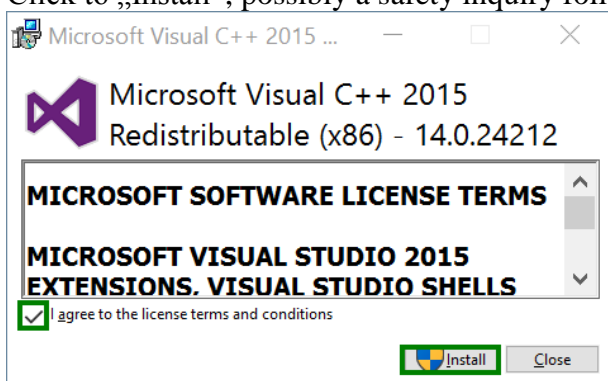


Step 2:

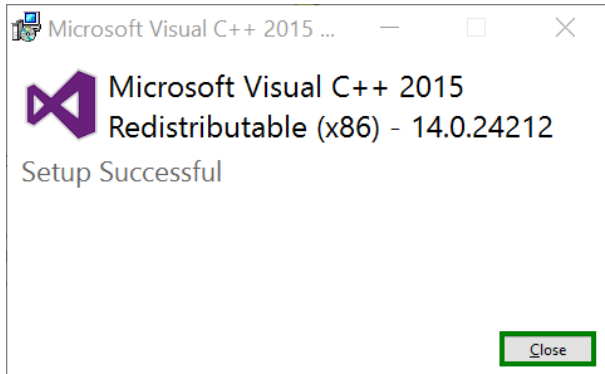


Step 3:

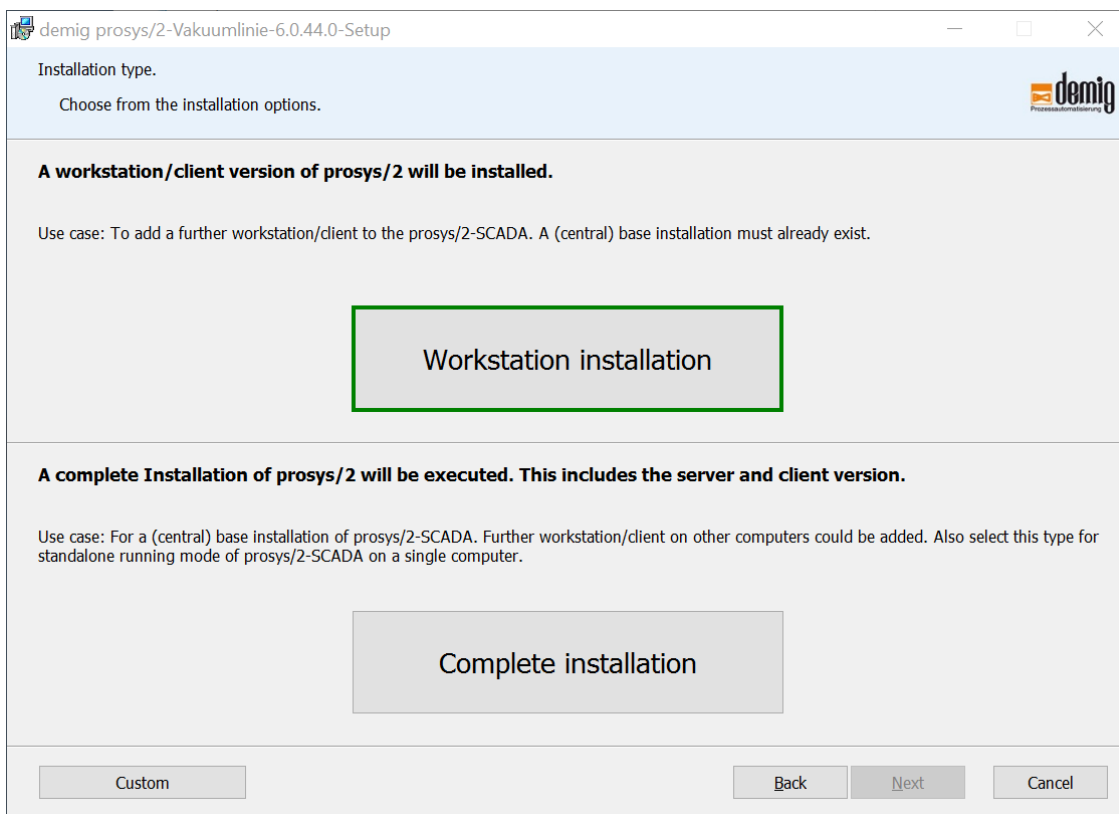
Click to „Install“, possibly a safety inquiry follows which has to be answered with „Yes“.



Step 4:

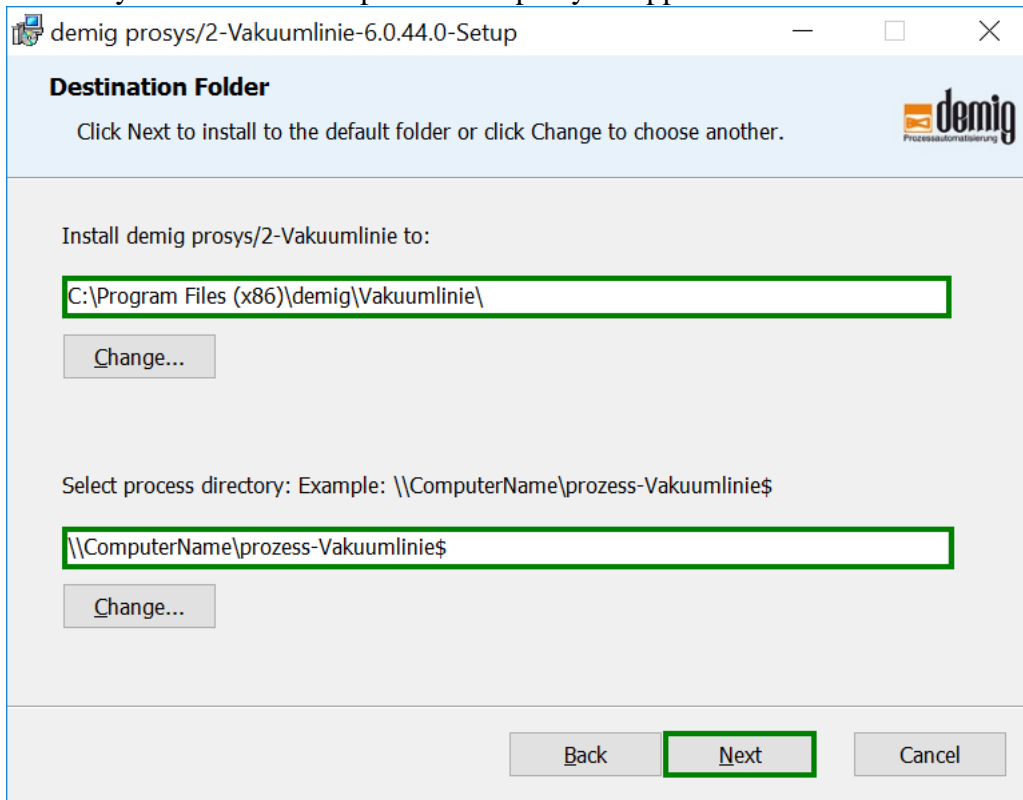


Step 5:



Step 6:

Here, the required process directory has to be entered or selected. Moreover, you can adopt - if necessary – the installation path for the prosys/2 application.



demig prosys/2-Vakuumlinie-6.0.44.0-Setup

Destination Folder

Click Next to install to the default folder or click Change to choose another.

Install demig prosys/2-Vakuumlinie to:

C:\Program Files (x86)\demig\Vakuumlinie\

Change...

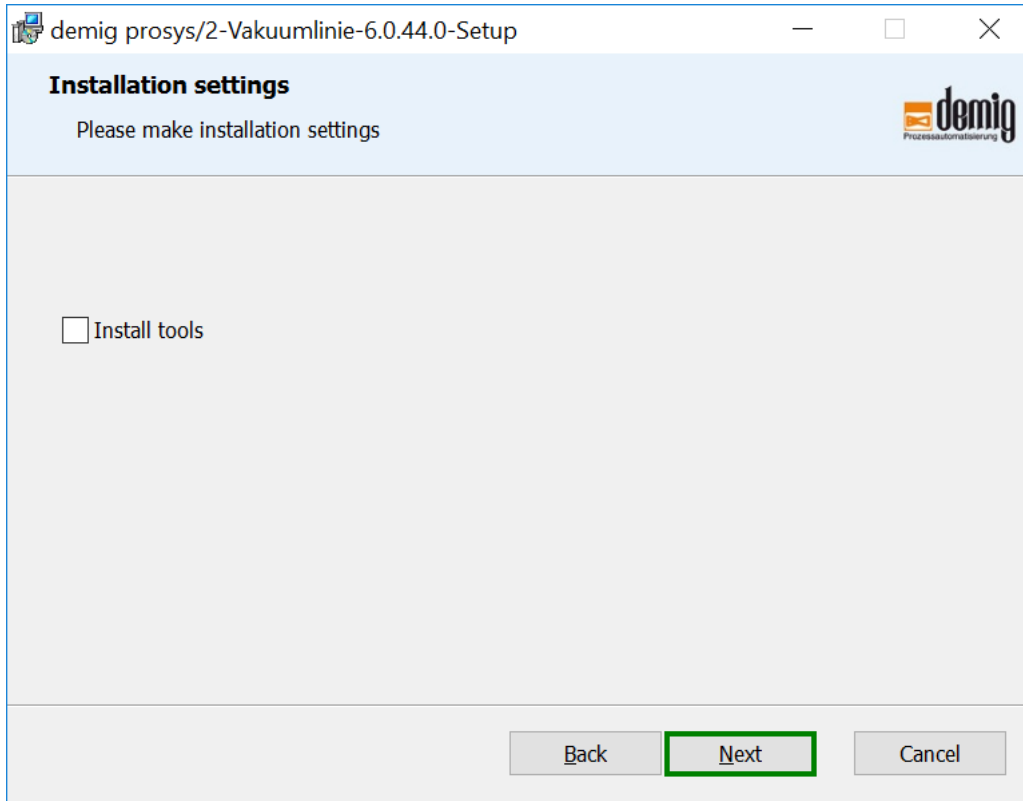
Select process directory: Example: \\ComputerName\prozess-Vakuumlinie\$

\\ComputerName\prozess-Vakuumlinie\$

Change...

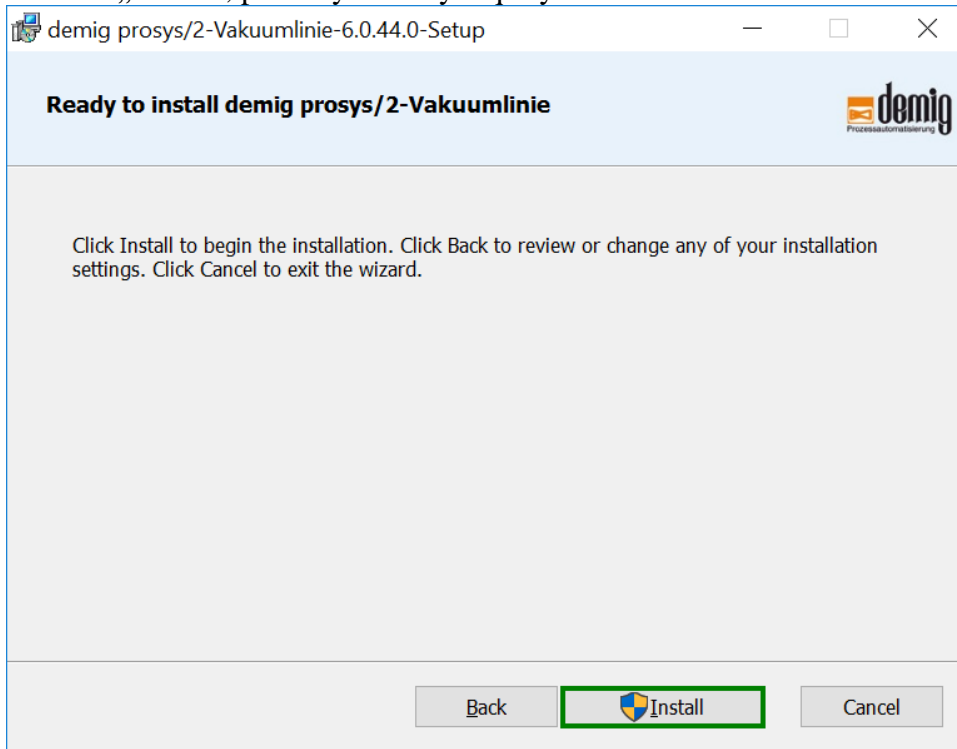
Back Next Cancel

Step 7:



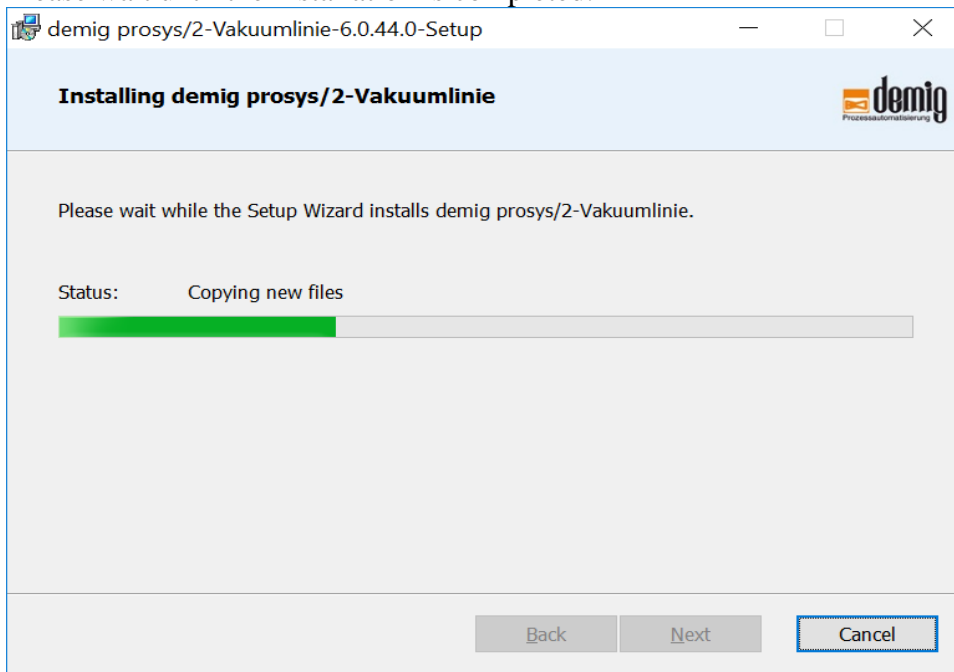
Step 8:

Click to „Install“, possibly a safety inquiry follows which has to be answered with „Yes“.



Step 9:

Please wait until the installation is completed.



Step 10:

