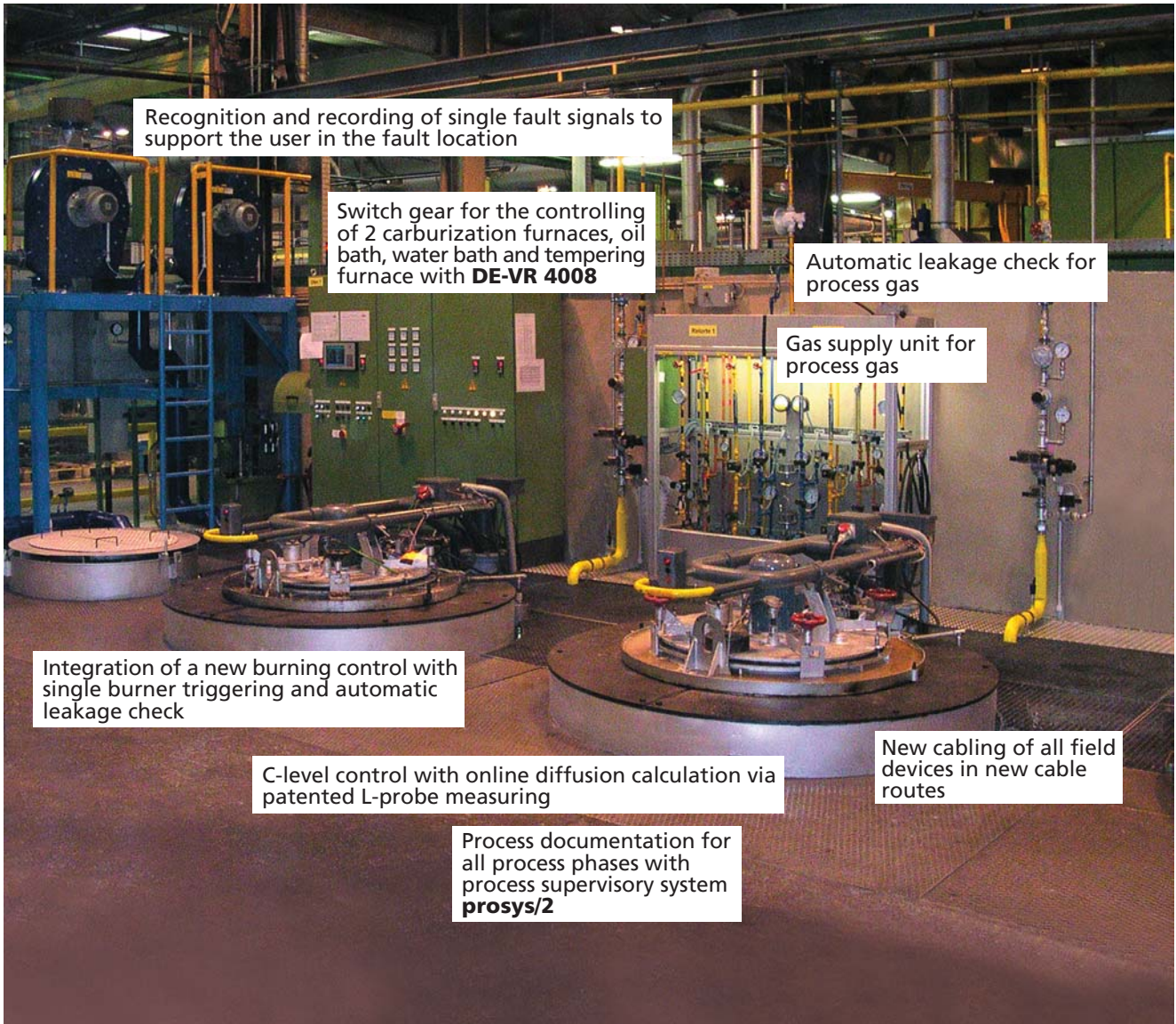


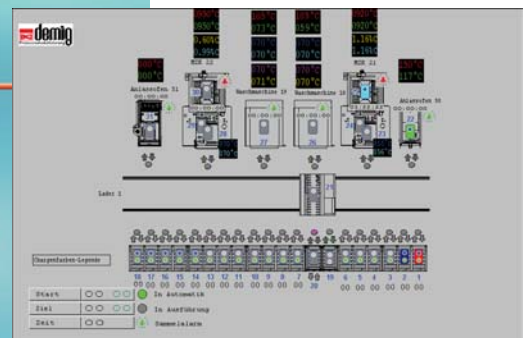
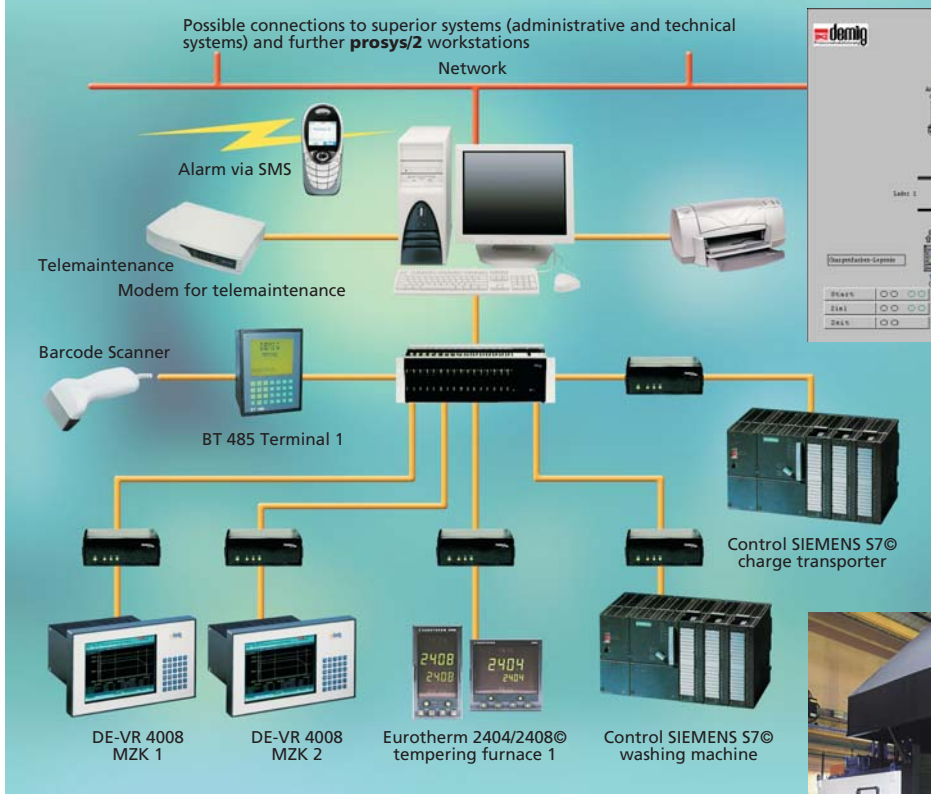
MODERNIZATION



Modernization of a pit-type furnace

AUTOMATION

Connection structure of the supervisory system **prosys/2**



Concept of a full-automatic heat treatment line

You find an example of a full-automatic furnace installation. Several furnace types are integrated:

- 2x multi-purpose chamber furnaces
- 1x tempering furnace
- 1x washing machine

The furnaces are charged by means of a charge transporter which works according to the instructions of **prosys/2**. The login and logout will be effected by the terminal.

prosys/2 controls, supervises and documents the logistical part of the furnace. Due to a structured programming/recipe creation the charge will be guided through the installation and will be treated according to each single step of the program.

Occuring alarms during the manless operation are transferred via SMS. Telemaintenance and tele-operation are possible via modem.

© are registered trade marks of the individual companies